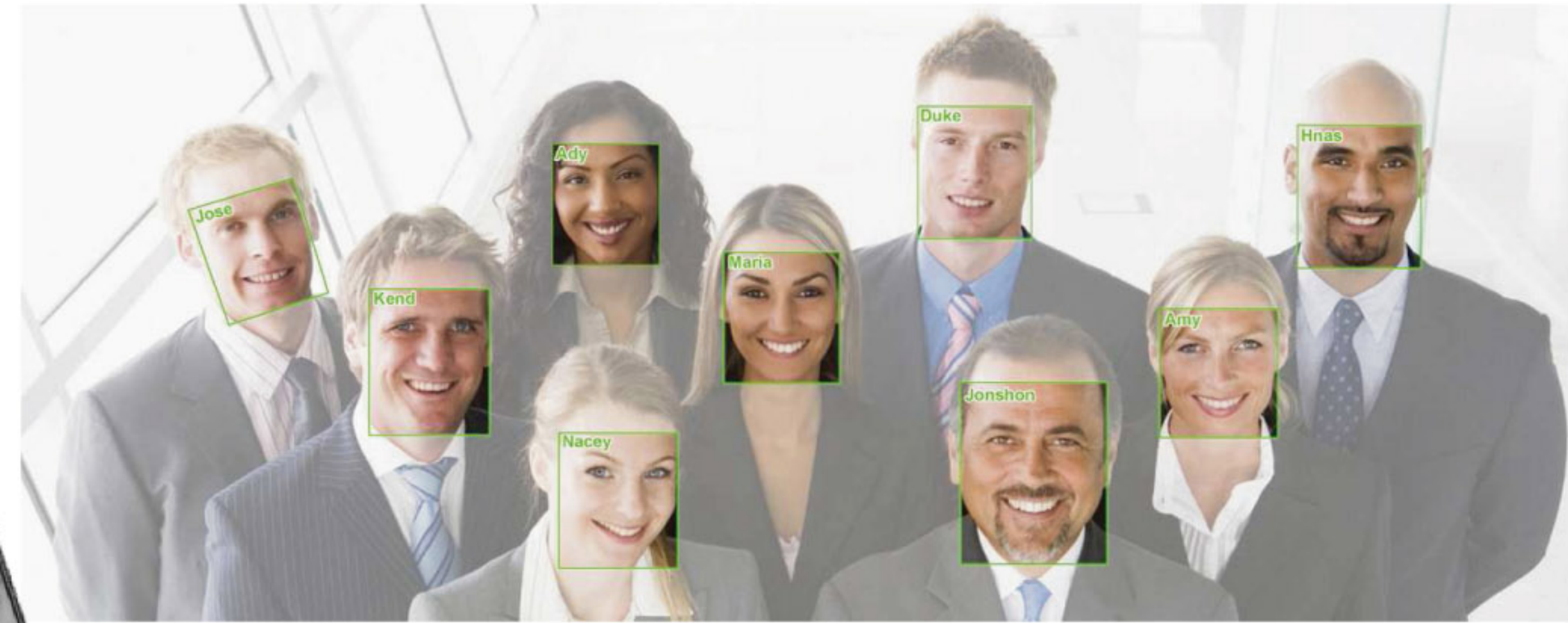




SONIC
SECURITY SOLUTION

ผู้นำด้านระบบรักษาความปลอดภัย
SECURITY TECHNOLOGY SOLUTION

- SECURITY TECHNOLOGY
- BIOMETRIC TECHNOLOGY
- RFID TECHNOLOGY
- CCTV TECHNOLOGY

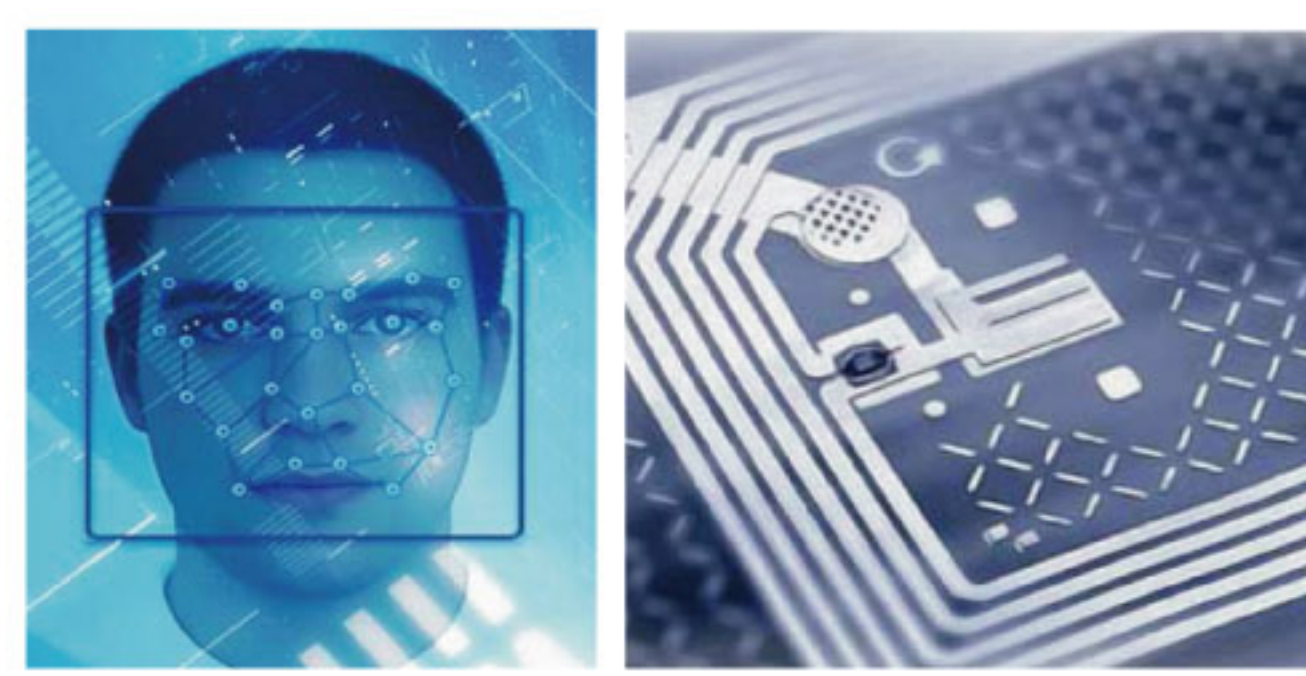


Professional Facial Access Control

เครื่องสแกนหน้าบันทึกการทำงานพร้อมระบบ ความคุมการเปิด-ปิด ประตู



S501
FACE SCAN



- รองรับระบบการเปิด-ปิด ประตู
- หน้าจอ 3-inch TFT touch screen
- รองรับ 2,000 ลายนิ้วมือ 400 ใบหน้า
- รองรับการ์ดได้ 10,000 ใบ(optional)
- จดจำข้อมูลสูงสุด 10,000 ข้อมูล



S501 is a new generation multiple biometric identification product, standard integrating with Face, Fingerprint, PIN recognition and optional with RFID mode, as to facial identification algorithm, it captures the relative position, size, and shape of user's eyes, nose, cheekbones, and jaw features, these feature templates are used to be matching feature data, when users verify on device, it distills captured features into value and compares with templates to eliminate variance. MultiBio 700 may hold 400 faces (optional 3000) without dividing groups, its default identification mode is Fingerprint & Face, additionally, as it is a kind of professional access control facial device, it may work with the third party such as electric lock, alarm, door bell, sensor and so on, in order to improve security for human life and enterprise information.

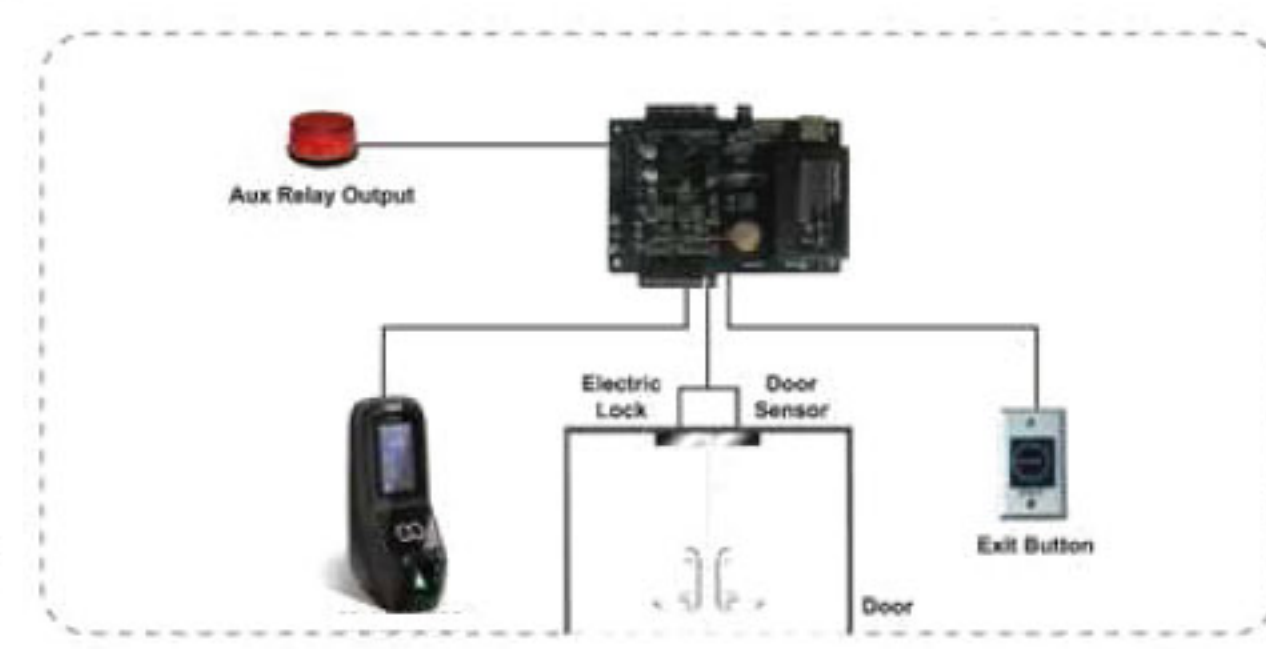


SECURITY TECHNOLOGY SOLUTION

SONIC
SECURITY SOLUTION

Connection Diagram:

▶ Work Together with Controller



▶ Standalone



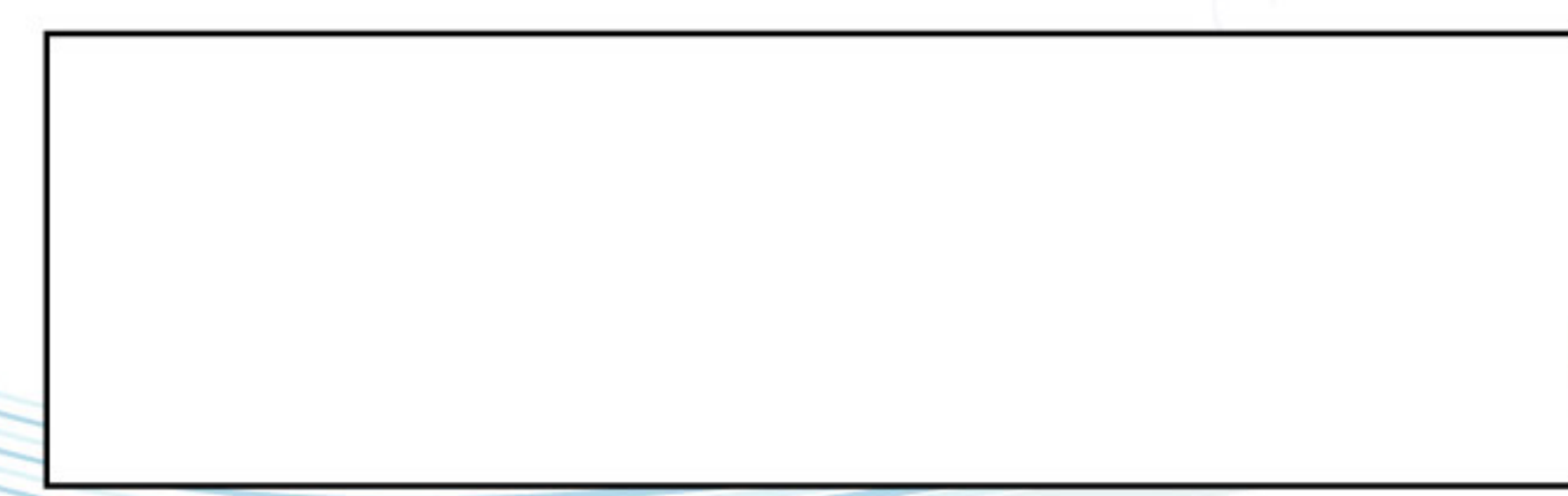
S501
FACE SCAN

Features:

- Elegant ergonomic design
- Default verification mode is Fingerprint&Face, available to choose other 19 modes, such as RFID&Face, Face&PIN, Fingerprint only, RFID only.
- TCP/IP, RS232/485 communication and USB Host.
- 3.0 inch TFT touch screen, T9 Input, 9 Digit User ID.
- 2 user-defined function keys, the left one is for door bell, the right one is for shift of identification mode.
- Infra-red optical system enables user-identification in poorly lit environments.
- Wiegand input for working with wiegand reader, wiegand output for connecting to access control panel.
- Optional with ID card module or Mifare card module (available when using ZKFinger9.0 algorithm).
- Professional access control compatible with the 3rd party door sensor, alarm, exit button, wired bell and electric lock.
- 50 time zones, 99 groups and 10 unlock combinations, anti-pass back and dismantle function.

Specifications:

CPU	ZK Multi-Bio CPU 630MHz
Memory	256M Flash, 64M SDRAM
Hardware	Platform: ZEM600
Fingerprint Sensor	ZK Optical Sensor
Camera	High Resolution Infrared Camera
Display	3 Inch Touch Screen
Face Capacity	400 (optional 3000)
Fingerprint Capacity	2000 (optional 5000)
ID Card Capacity	10,000(optional function)
Logs Capacity	10,000
Algorithm Version	ZKFace7.0(optional ZKFace5.0) & ZKFinger10.0/ZKFinger9.0
2000mAh Backup Battery	N/A
Communication	TCP/IP, RS232/485, USB Host
Access Control Interfaces for	3rd party electric lock, door sensor, alarm, wired bell and exit button
Wiegand Signal	Wiegand in and out
Optional Functions	ID Card, Mifare card.
Power Supply	12V/3A
Verification Speed	<2S
Operating temperature	0 °C-45 °C
Operating Humidity	20%-80%
Dimensions	275(L)*100(H)*195(W) mm
Gross Weight	0.87 kg



Copyright © 2011 BENNEX.CO.,LTD. All RIGHTS RESERVEN

POWER BY BENNEX CO.,LTD



Copyright © 2011 BENNEX.CO.,LTD. All RIGHTS RESERVEN

POWER BY BENNEX CO.,LTD